

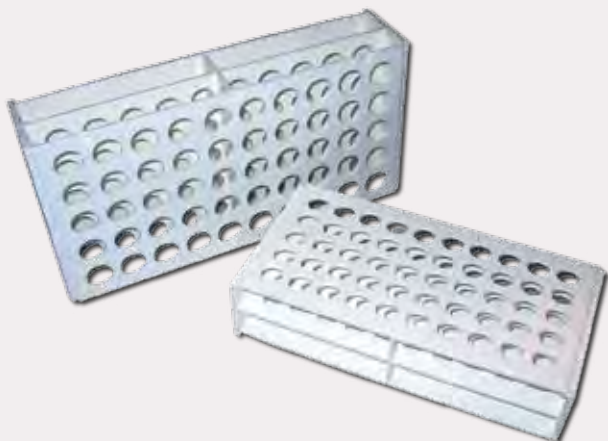
Portaprovette - Racks

Rack per Conetti Portacampione - Rack for Microtubes

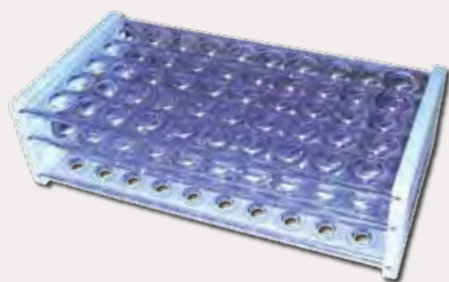


Cod.	Posti Places	Vol.	dim. mm	h mm	Conf. Box	Materiale Material	Colore Colour
BSP210	50	0,5	165x80	25	20	ABS	Bianco - White
BSP211	50	1,5	210x110	30	20	ABS	Bianco - White

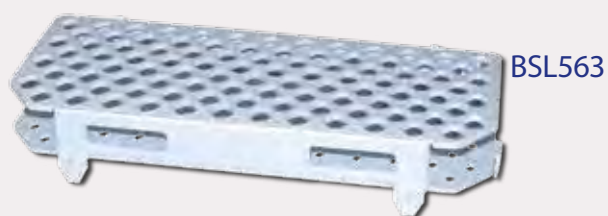
Rack per Provette - Rack for Tubes



Cod.	Posti Places	Ø mm	dim. mm	h mm	Conf. Box	Materiale Material	Colore Colour
BSP213	50	13	210 x 105	50	12	ABS	Bianco - White
BSP217	50	16,3	240 x 110	53	12	ABS	Bianco - White

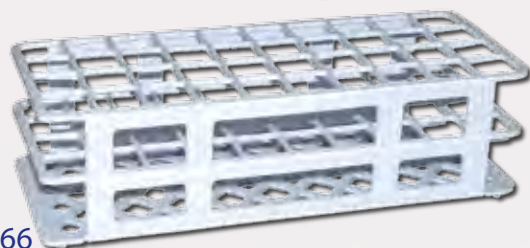


Cod.	Posti Places	Ø mm	dim. mm	h mm	Conf. Box	Colore Colour
BSP207	50	13	210x105	68	20	Neutro - Neutral
BSP208	50	15	230x110	68	20	Neutro - Neutral
BSP209	50	18	250x115	68	20	Neutro - Neutral



BSL563

Cod.	Posti Places	Ø mm	dim. mm	h mm	Materiale Material
BSL563	100	Cones/Conetti	263 x 109,5	45	PP
BSL564	90	13	246 x 105	64	PP
BSL565	60	16	246 x 105	72	PP
BSL566	40	20	246 x 105	72	PP
BSL567	40	25	225 x 125	85	PP
BSL568	24	30	300 x 112	85	PP



BSL566

Portaprovette - Racks

Portaprovette in Polipropilene resistente da - 80 +121 C° Autoclavabili

Rack in Polypropylene, -80 to +120 °C resistance. Autoclavable.



BSM5839

Per provette da 50ml con Ø 30mm - 6 posti, colore azzurro - Dim 122 x 88 x 70 mm.

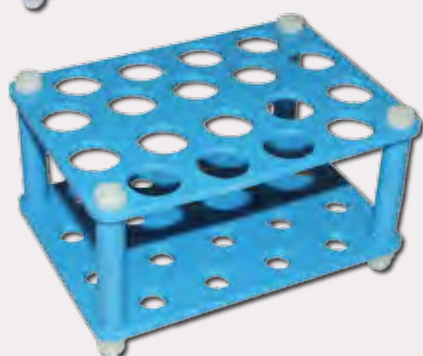
For 50ml tubes Ø 30mm - 6 places - light blue - Dim 122 x 88 x 70 mm.



BSM5840

Per provette da 50ml con Ø 30mm - 12 posti, colore azzurro - Dim 234 x 88 x 70 mm.

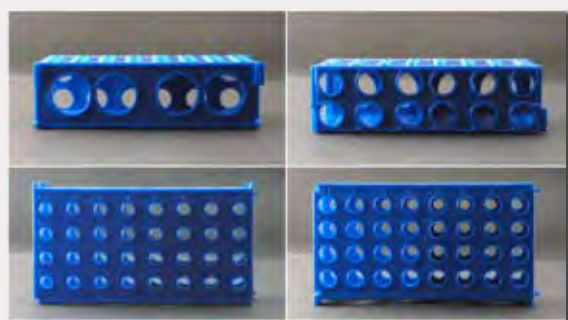
For 50 ml tubes, Ø 30mm - 12-place - light blue - Dim. 234 x 88 x 70 mm.



BSM5841

Per provette da 15ml con Ø 17mm - 18 posti, colore azzurro - Dim 122 x 88 x 70 mm.

For 15 ml tubes, Ø 17mm - 18-place - light blue - Dim. 122 x 88 x 70 mm.



BS29022A

Rack in PP adatto per quattro provette coniche da 50ml, dodici provette coniche da 15ml, 32 microtubes da 1,5 ml o 32 microtubes da 0,5 ml.

Rack in PP suitable for four 50ml conical tubes, twelve 15ml conical tubes, thirty-two 1,5ml microtubes or thirty-two 0,5ml microtubes.

Sacchetti per trasporto campioni - Bags

Sacchetti per trasporto campioni a Doppia Tasca

Laboratory bags with Double Pocket



Codice / Code	Colore / Color	cm
BSA2401	trasparente / transparent	16 x 16 x 23h
BSA2101	giallo / yellow	16 x 16 x 23h
BSA2201	verde / green	16 x 16 x 23h
BSA2461	rosa / pink	16 x 16 x 23h